

【Quick Start Guide】

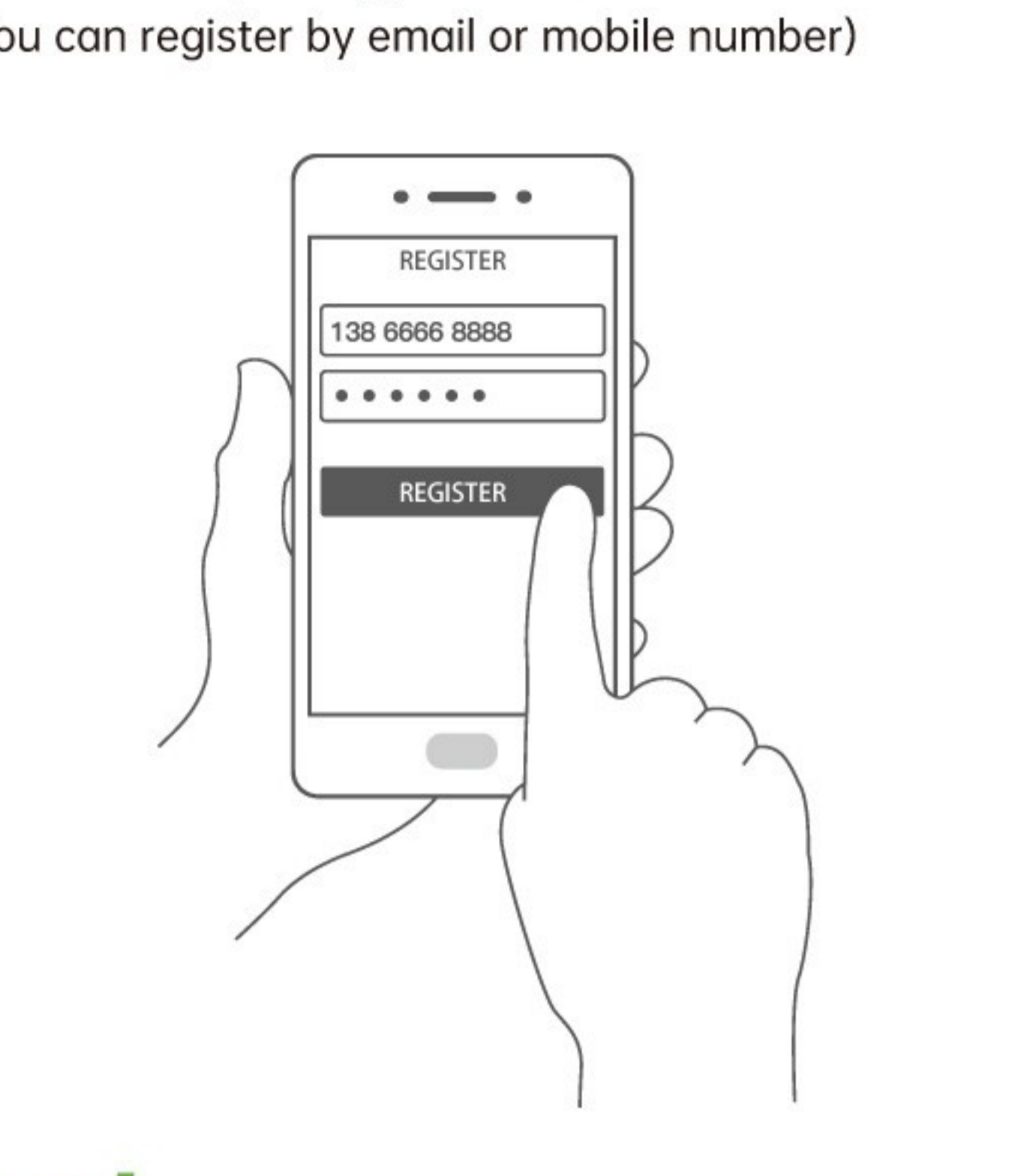
TriForce



【How To Use GlocalMe Cloud SIM Service?】

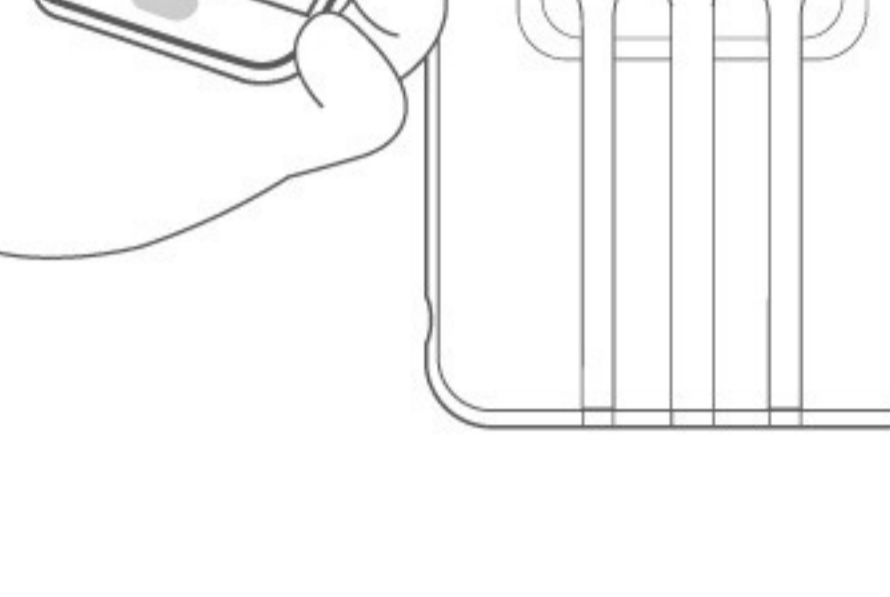
01/ Download GlocalMe App

① Download and install GlocalMe app on your mobile phone



02/ Register a GlocalMe Account (in App)

- ① Press **【Log in】** → **【Continue】**
- ② Follow the step to register an account (You can register by email or mobile number)



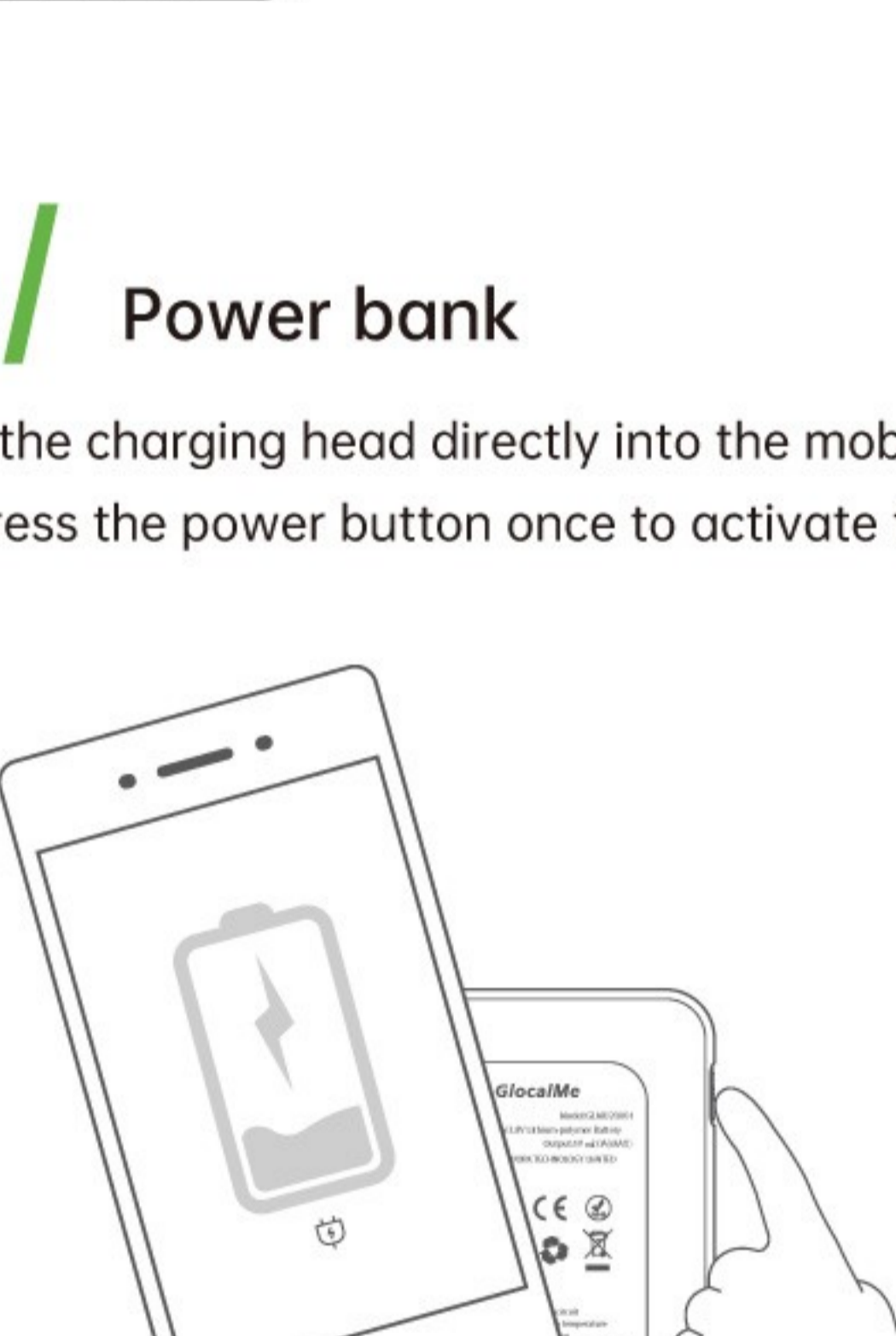
03/ Activate TriForce

- ① GlocalMe App → **【My Device】** → **【Activate Device】**
- ② Scan the device QR-code on the back of TriForce



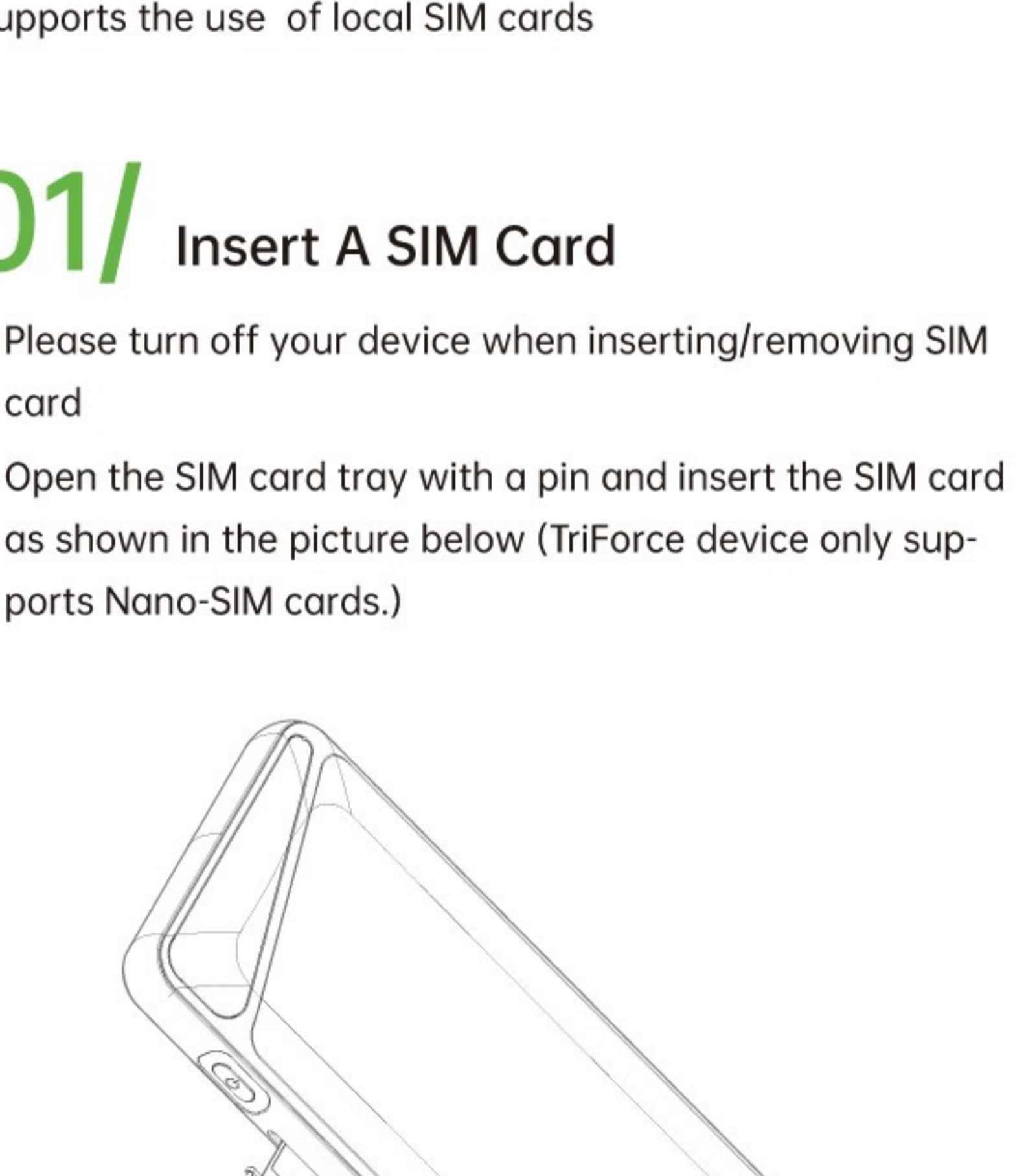
04/ Turn on TriForce

- ① Press and hold the power button for 3 seconds
- ② When the light of stays on, it means successful connection



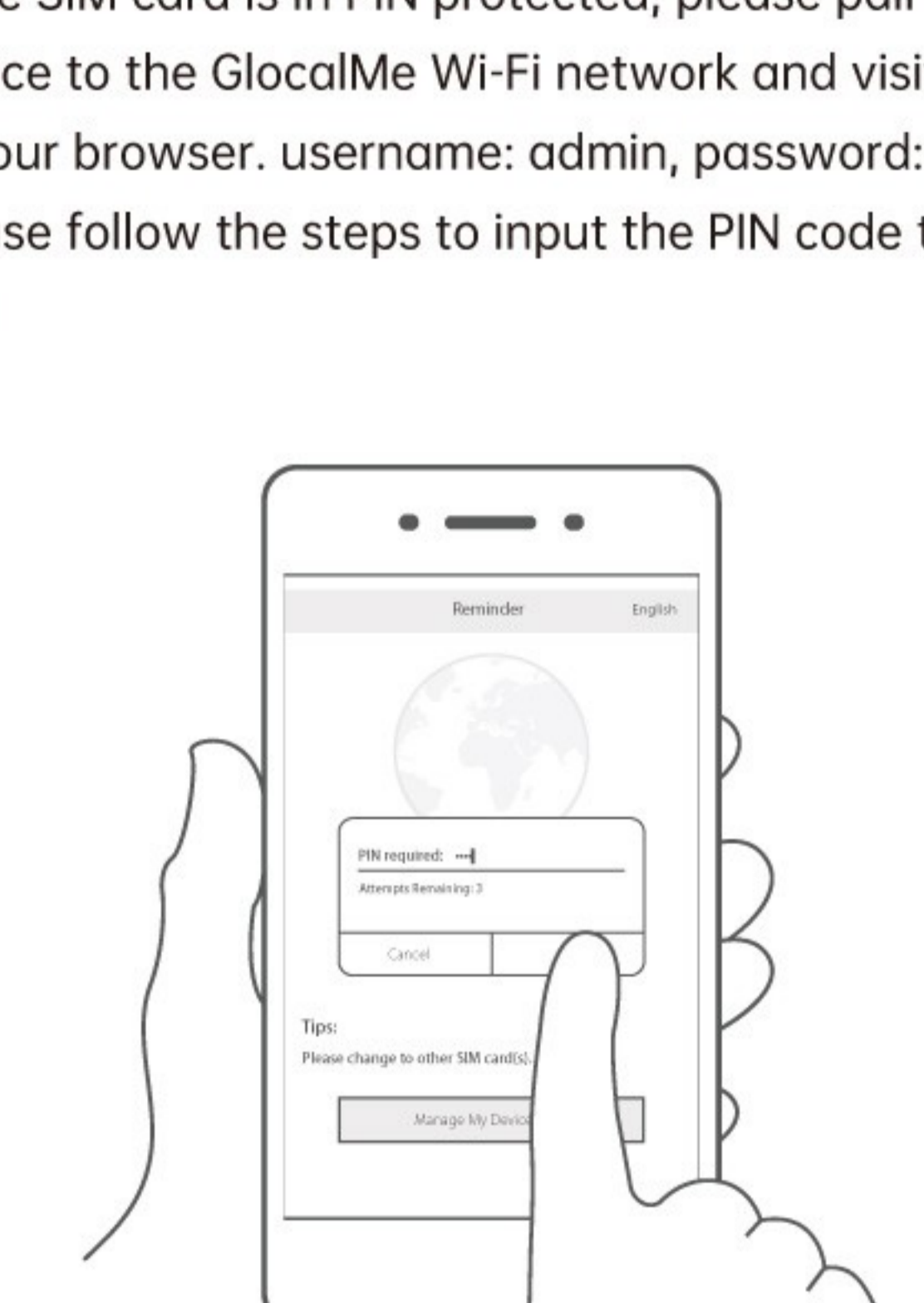
05/ Connect the Wi-Fi

- ① Find the Wi-Fi name and password at the back of TriForce
- ② Connect your mobile device in Wi-Fi setting



06/ Power bank

- ① Insert the charging head directly into the mobile device, and press the power button once to activate the discharge



【How To Use A Physical SIM Card?】

TriForce is default to run on Cloud SIM services, but it also supports the use of local SIM cards

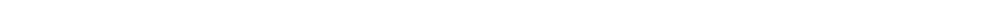
01/ Insert A SIM Card

- ① Please turn off your device when inserting/removing SIM card
- ② Open the SIM card tray with a pin and insert the SIM card as shown in the picture below (TriForce device only supports Nano-SIM cards.)



02/ Unlock the SIM Card (if PIN protected)

- ① If the SIM card is in PIN protected, please pair your mobile device to the GlocalMe Wi-Fi network and visit 192.168.43.1 in your browser. username: admin, password: admin. Please follow the steps to input the PIN code to unlock the SIM



03/ Set The APN Manually

- ① If you still cannot connect to the network after the above steps, you must add the APN manually and visit 192.168.43.1 in the browser. .

- ② **【Settings】** → **【SIM card manager】** → **【APN Settings】** → **【Add APN】** Enter the APN of your SIM card operator and click save

04/ SIM Card Selection

- ① Connect your mobile phone / laptop to GlocalMe Wi-Fi and visit 192.168.43.1 in the browser
- ② Select **【SIM】** in the section of SIM Card Selection

